

Installation and Dongle Setup

1. Install Wizard.....	1
2. How to Install the GEOstrip USB Dongle.....	3
3. Modes.....	4

1. Install Wizard

*****IMPORTANT*****

IF YOU HAVE PURCHASED GEOSTRIP SYSTEMS™ AND ARE LOADING THE SOFTWARE ON YOUR COMPUTER FOR THE FIRST TIME:

COMPLETE THE DOWNLOAD AND SETUP FOR GEOSTRIP SYSTEMS™ BEFORE INSERTING THE SECURITY DONGLE.

IF YOU HAVE GEOSTRIP SYSTEMS™ ALREADY ON YOUR COMPUTER YOU WILL NEED TO REMOVE THAT VERSION OF GEOSTRIP SYSTEMS BEFORE YOU INSTALL A NEW VERSION.

To Remove a Previous Version of GEOstrip Systems

This can be done by going to Control Panel, Add / Remove a Program or Programs and Features, selecting the current GEOstrip and selecting uninstall.

To Install GEOstrip Systems

1. Download GEOstrip Systems™ Striplog Install Wizard from www.grsi.ca and save to your desktop.

GEOstrip Systems™ Striplog will run on:

- Windows 8 (Home, Pro)
- Windows 7 (Home, Home Premier, Business)
- Vista operating systems. (Home, Home Premier, Business)
- Windows XP (Home, Pro)
- Win 2000 (pro)
- Windows Server 2003

NOTE: When GEOstrip Systems is run on Windows Vista Business the software is forced to Read-Only status after installation. To change this back to edit & save abilities:

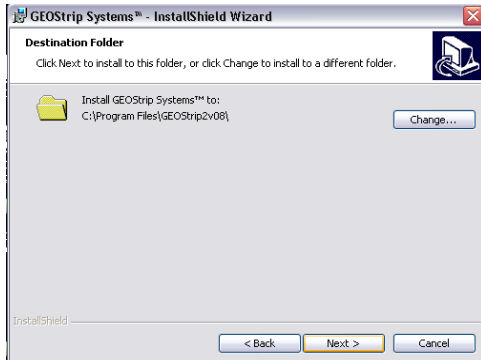
1. Navigate to GEOstrip System's Executable in C: Program Files/GEOstrip 4.xx
2. Right click on the GEOstrip Program and select Properties.
3. Select the Compatibility Folder.
4. Click on Run this program in compatibility mode for Windows XP Service Pack 2.
5. Then click on Run as Administrator.
6. Click on Apply and you will now be able to edit and save Logs.

This will have to be done each time you upgrade to a newer version of GEOstrip Systems.

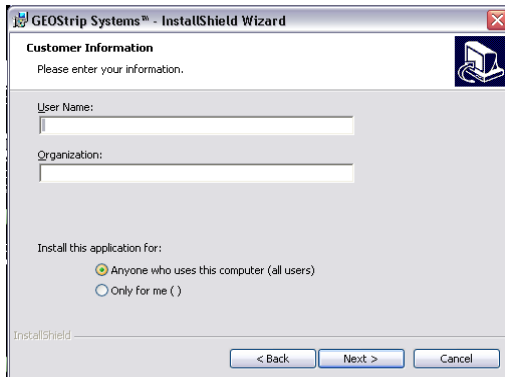
2. When you see the GEOstrip Setup Launcher on your desktop double click on it to start installation.

3. The Welcome to GEOstrip Install Shield Wizard will start, click on Next.

4. The Destination Folder choice will appear. Here you may change the default installation location or simply click Next to continue.



5. The Customer Information identification box will come up. Please fill in and click Next.



6. Then you should see the Install Shield Wizard Complete message come up. Click Finish.

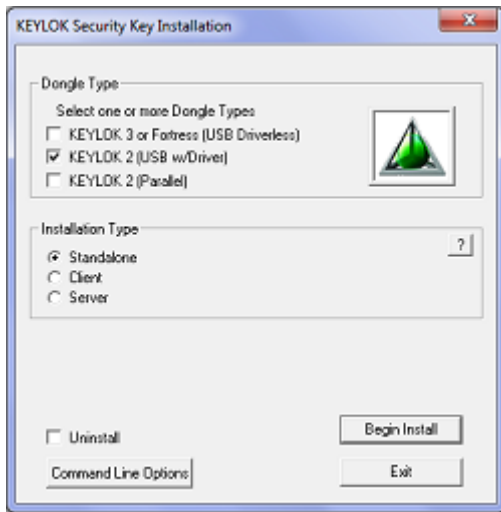


7. You should now see the GEOstrip Systems™ Striplog Icon on your desktop. If so, your program has loaded successfully. Before running GEOstrip for the first time follow the USB Dongle instructions in the next section. Once completed double click the icon to launch the GEOstrip VC Striplog™ program.

2. How to Install the GEOstrip USB Dongle

If you have a GEOstrip USB Dongle and are installing it for the first time please follow the following steps:

1. Install GEOstrip Systems™ software first before inserting the Dongle Driver.
2. From the Start menu locate the GEOstrip 4.08 folder, and run the USB Dongle Installer with Keylok 2 (USB w/Driver) selected.



3. Click 'Begin Install'
4. Once completed close the installer and attach the USB Dongle.
5. Depending on the system you may or may not be presented with a New hardware wizard. If you are simply click next then finish. Wait for windows to indicate that the device has been successfully installed.
6. Now launch GEOstrip from the Start menu or Desktop icon. Goto Help -> Verify License -> Over the Internet and click Process.
7. To view Dongle modes and days remaining Goto Help -> License Info.

3. Modes

Viewer Mode

If you have downloaded GEOstrip Systems™ Striplog from www.grsi.ca you will be operating in view only mode until the software detects a valid USB security dongle.

In View mode you will be able to:

- Open log files
- View log files
- Print logs
- Export LAS, ASCII, GEOLOG ASCII, Geological Descriptions & Survey Data.
- Search for text and depths.
- View Column header and Lithology Palette.
- Setup options like depth scales, grid colors and time date formats.
- View Log Headers.
- Transmit viewed log through email.
- Under help, view the GEOstrip VC Striplog™ User Manual with our license agreement and view current version of software.
- Right click the Curve track column and view Curve Data changes and View Scale changes.

Full User Mode

If you have purchased a license from GRS Inc. then you will have been provided a security key Dongle. When the program starts and detects a valid licensed USB security key dongle you will have full access to the entire GEOstrip VC Striplog™ program.

You can always check the status of your mode and how many days are left in your license by selecting Help on the top task bar and then License info.

